

NEWMILL

**AN ITALIAN
FAMILY YARN**

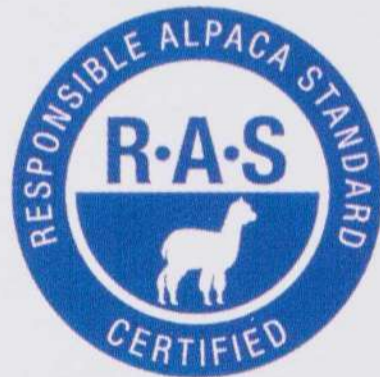
**SPRING
SUMMER
2026**

BOOK

WE ARE CERTIFIED



Certified by ICEA
ICEA-TX-759



Certified by ICEA
ICEA-TX-759



Certified by ICEA
ICEA-TX-759



Certified by ICEA
ICEA-TX-759



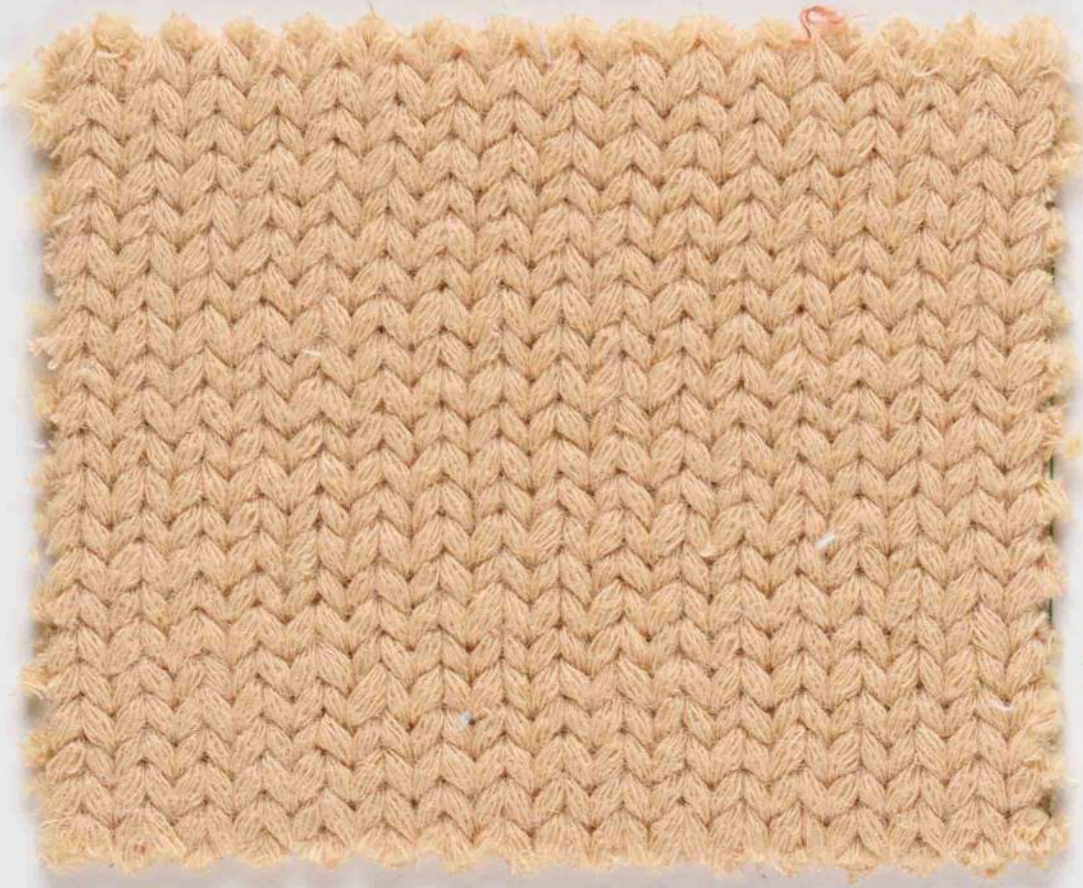
Certified by ICEA
ICEA-TX-759



Certified by ICEA
ICEA-TX-759



COTTON BLENDS



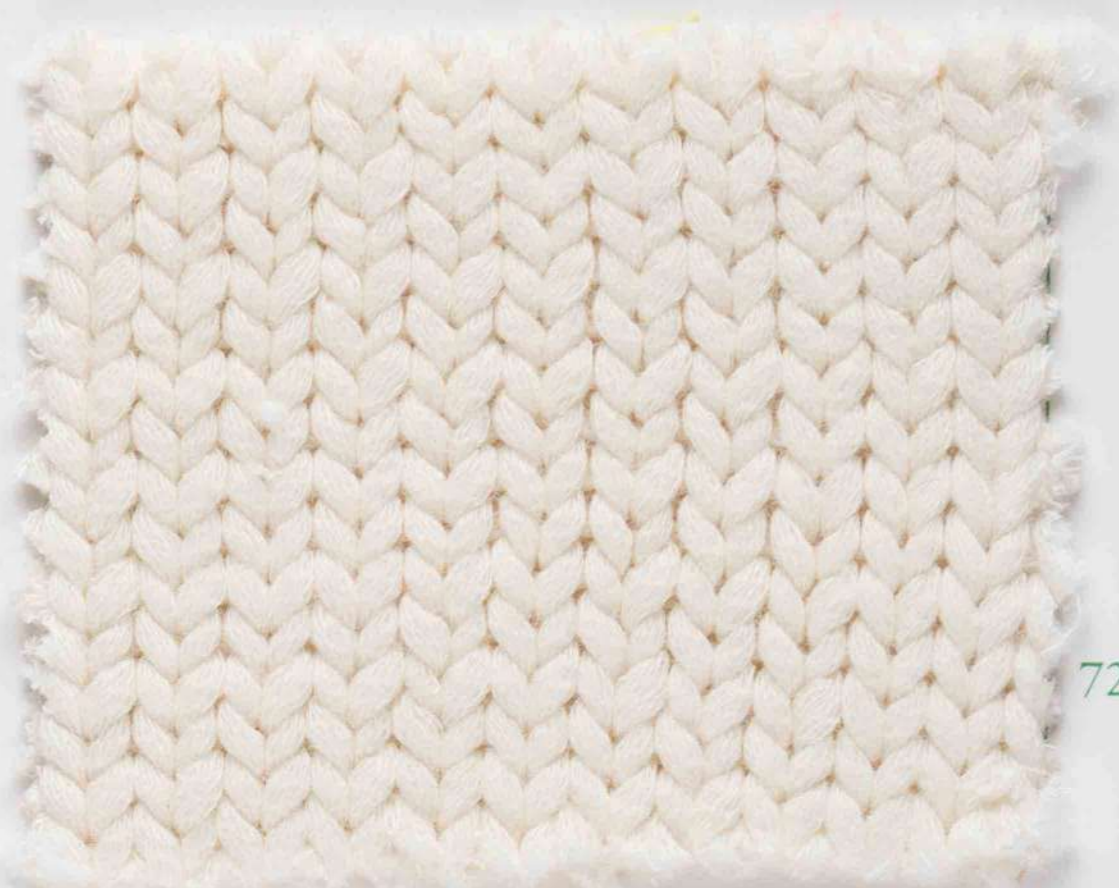
Certified by ICEA
ICEA-TX-759

74% ORGANIC CO
26% PA

BORG 2 (1)

Nm. 3.600

74% COTONE ORGANICO
26% FIBRA POLIAMMIDICA



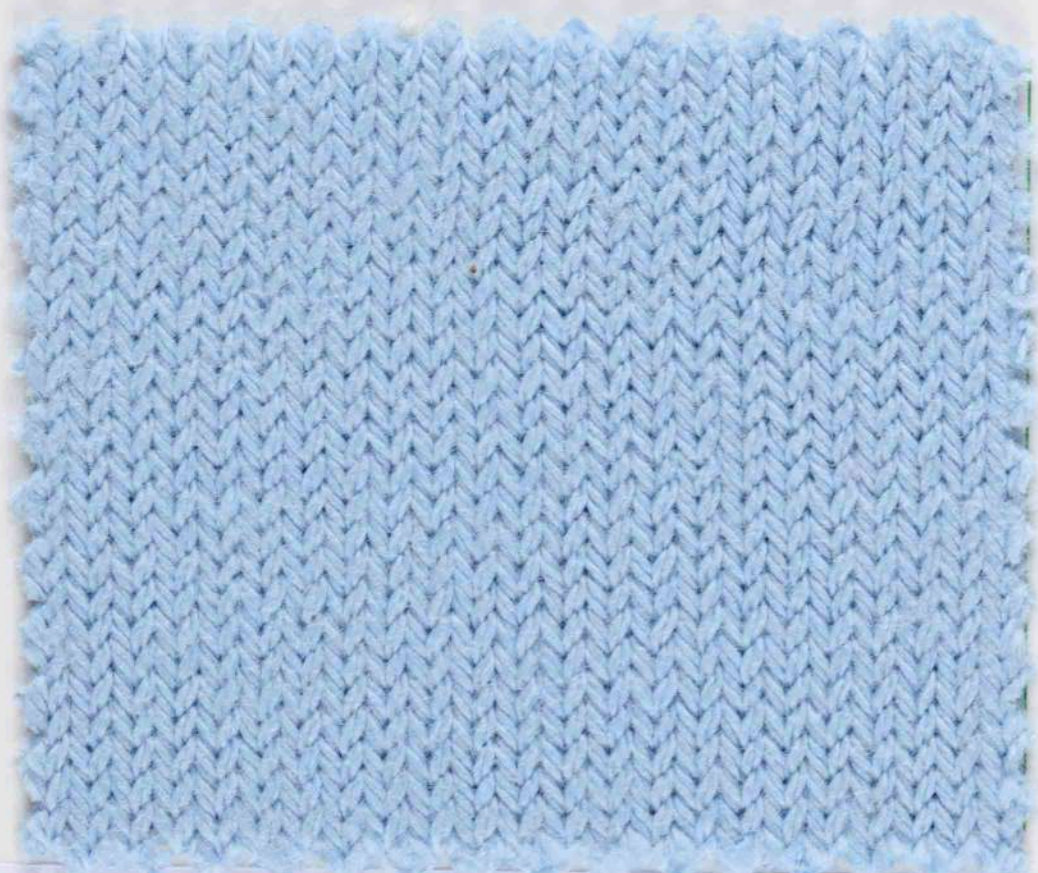
Certified by ICEA
ICEA-TX-759

72% ORGANIC CO
28% PA

NO CAR (1)

Nm. 2.200

72% COTONE ORGANICO
28% FIBRA POLIAMMIDICA



Certified by ICEA
ICEA-TX-759

95% ORGANIC CO
5% PA

PONZA (2)

Nm. 5.400

95% COTONE ORGANICO
5% FIBRA POLIAMMIDICA



Certified by ICEA
ICEA-TX-759

95% ORGANIC CO
5% PA

KIRON (2)

Nm. 3.300

95% COTONE ORGANICO
5% FIBRA POLIAMMIDICA

COTTON BLENDS



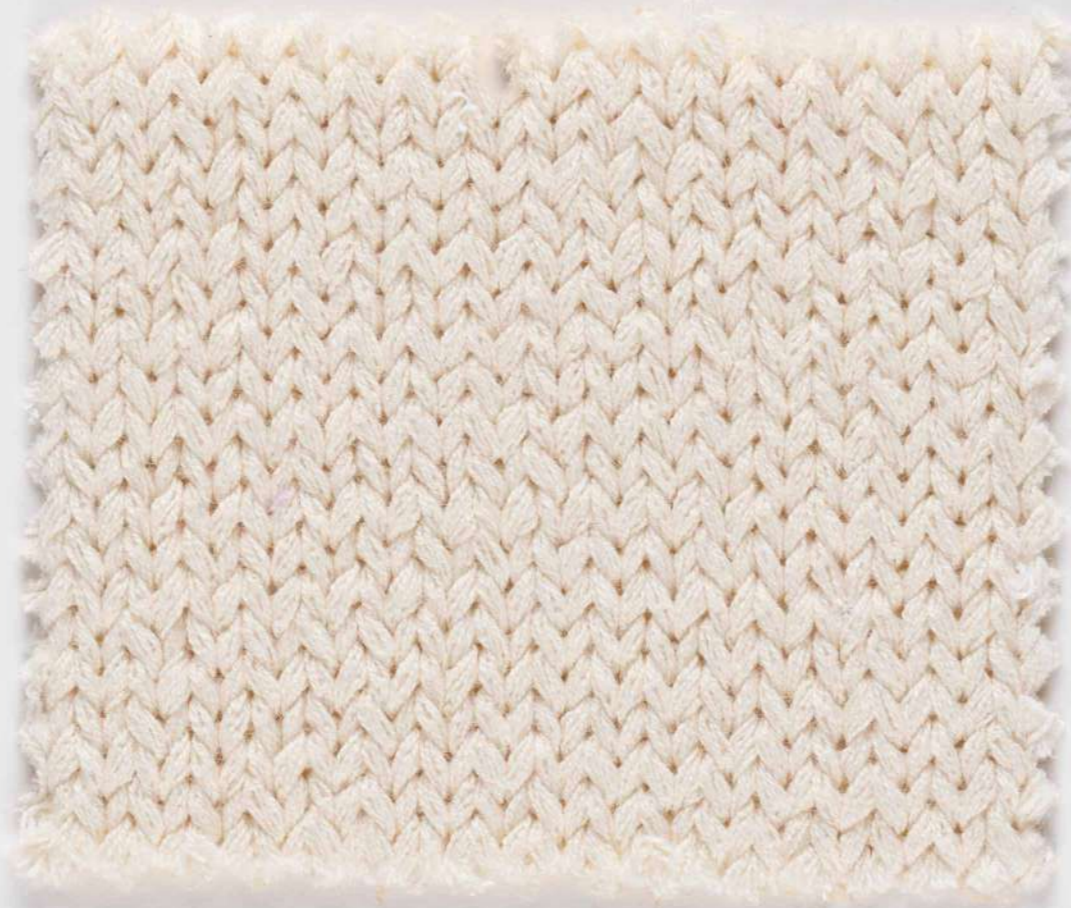
Certified by ICEA
ICEA-TX-759

100% ORGANIC CO

ABISSINO (3)

Nm. 2.000

100% COTONE ORGANICO



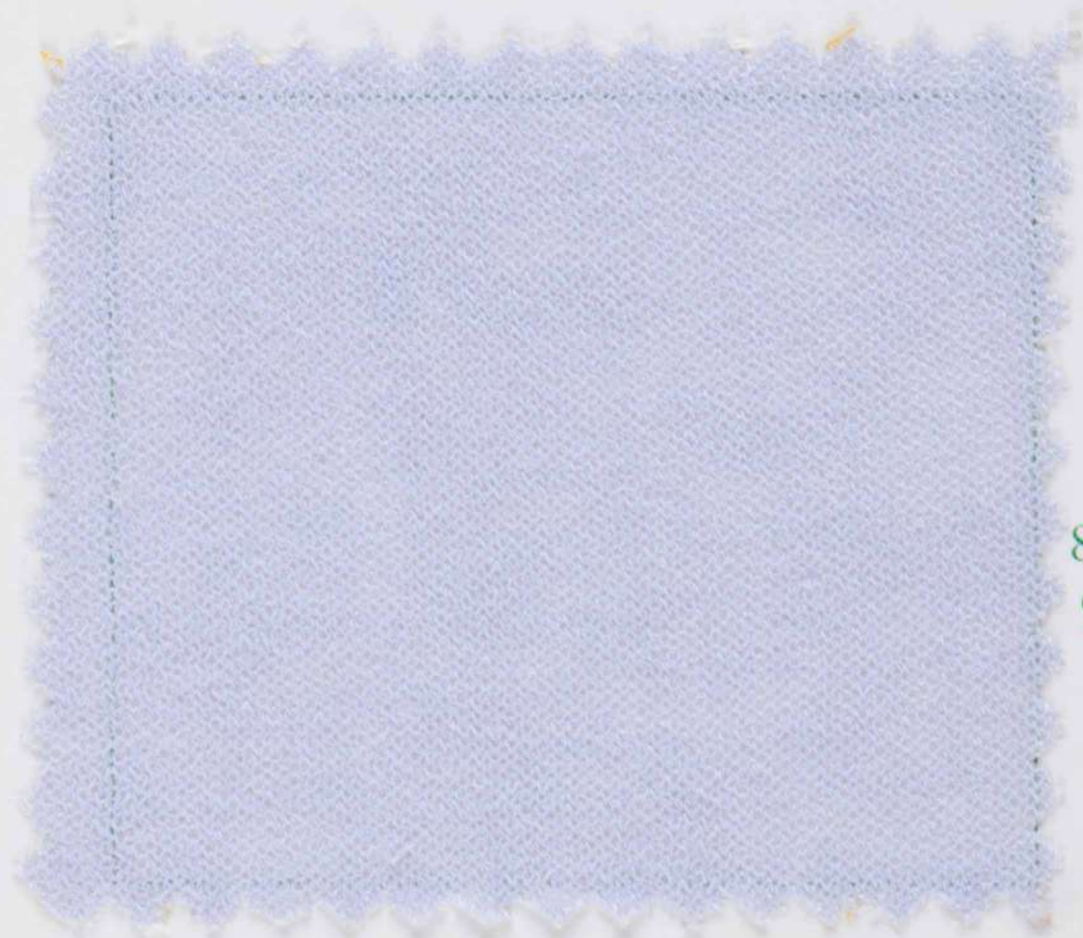
Certified by ICEA
ICEA-TX-759

100% ORGANIC CO

PACHA 3.400 (4)

Nm. 3.400

100% COTONE ORGANICO



ON REQUEST
87% ORGANIC CO
9% PA GRS - 4% PA



Certified by ICEA
ICEA-TX-759

FARFALLA (5)

Nm. 55.000

87% COTONE ORGANICO
13% FIBRA POLIAMMIDICA



Certified by ICEA
ICEA-TX-759

TEXTURED LOOK



Certified by ICEA
ICEA-TX-759

64% ORGANIC CO
36% PA

RICCIOLINO (6)

Nm. 20.000

64% COTONE ORGANICO
36% FIBRA POLIAMMIDICA



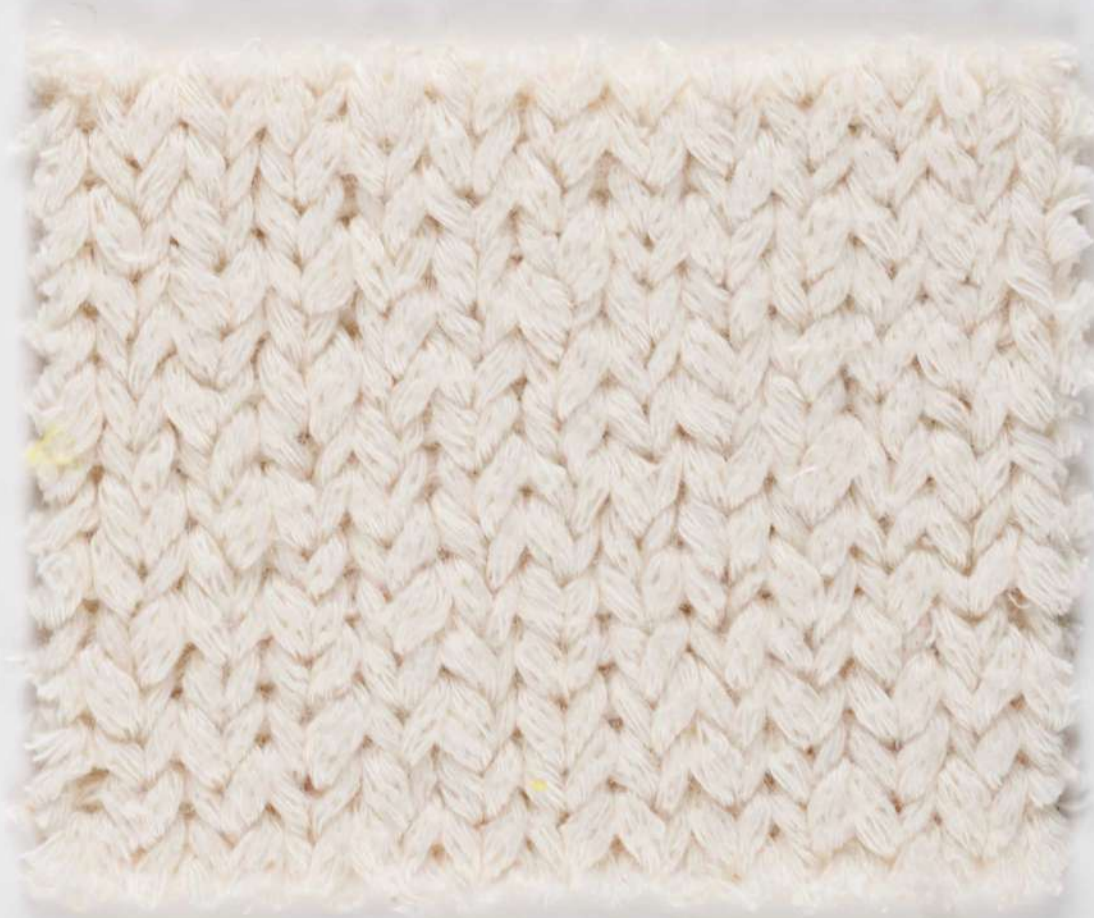
Certified by ICEA
ICEA-TX-759

82% ORGANIC CO
18% PA GRS

BALINESE (6)

Nm. 5.400

82% COTONE ORGANICO
18% FIBRA POLIAMMIDICA GRS



Certified by ICEA
ICEA-TX-759

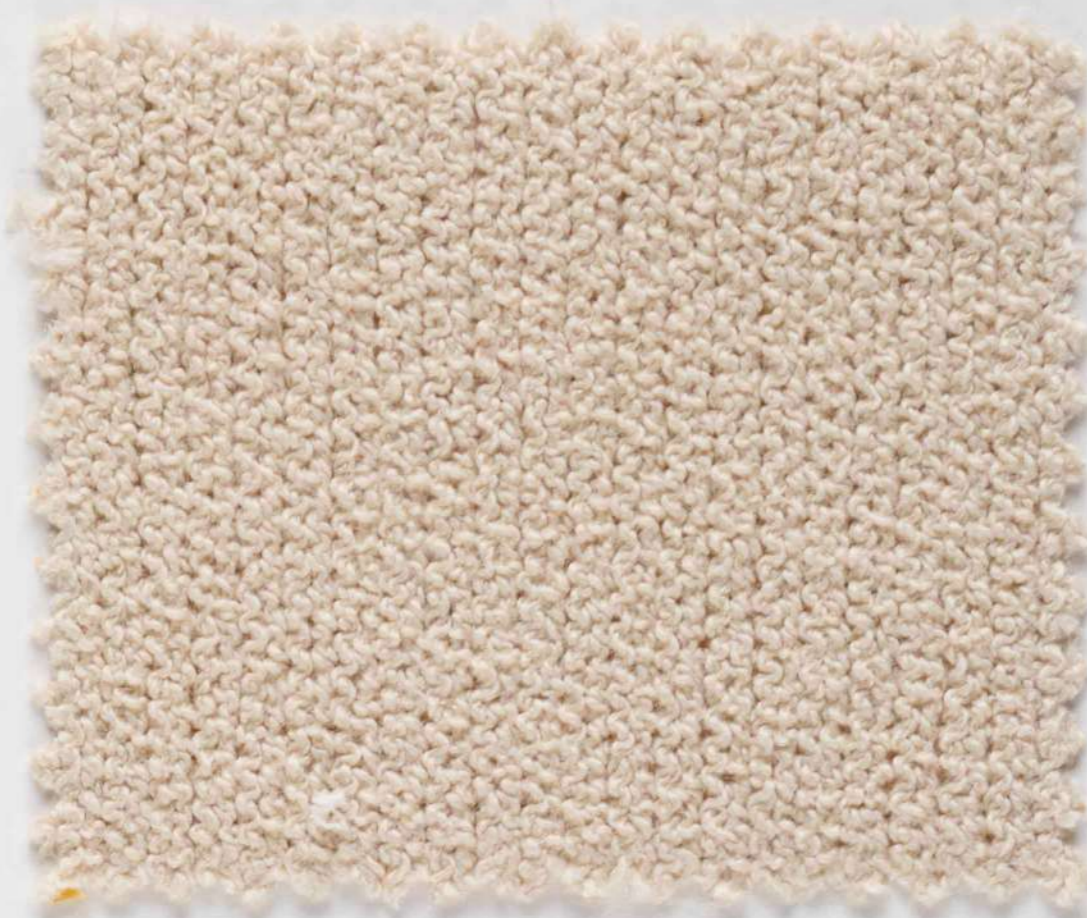
100% ORGANIC CO

BURMESE (4)

Nm. 1.950

100% COTONE ORGANICO

TEXTURED LOOK



Certified by ICEA
ICEA-TX-759

74% ORGANIC CO
23% PA - 3% EA

KAMA KAMA ⑦

Nm. 6.400

74% COTONE ORGANICO
23% FIBRA POLIAMMIDICA
3% ELASTOMERO



ON REQUEST

60% ORGANIC CO - 40% PA

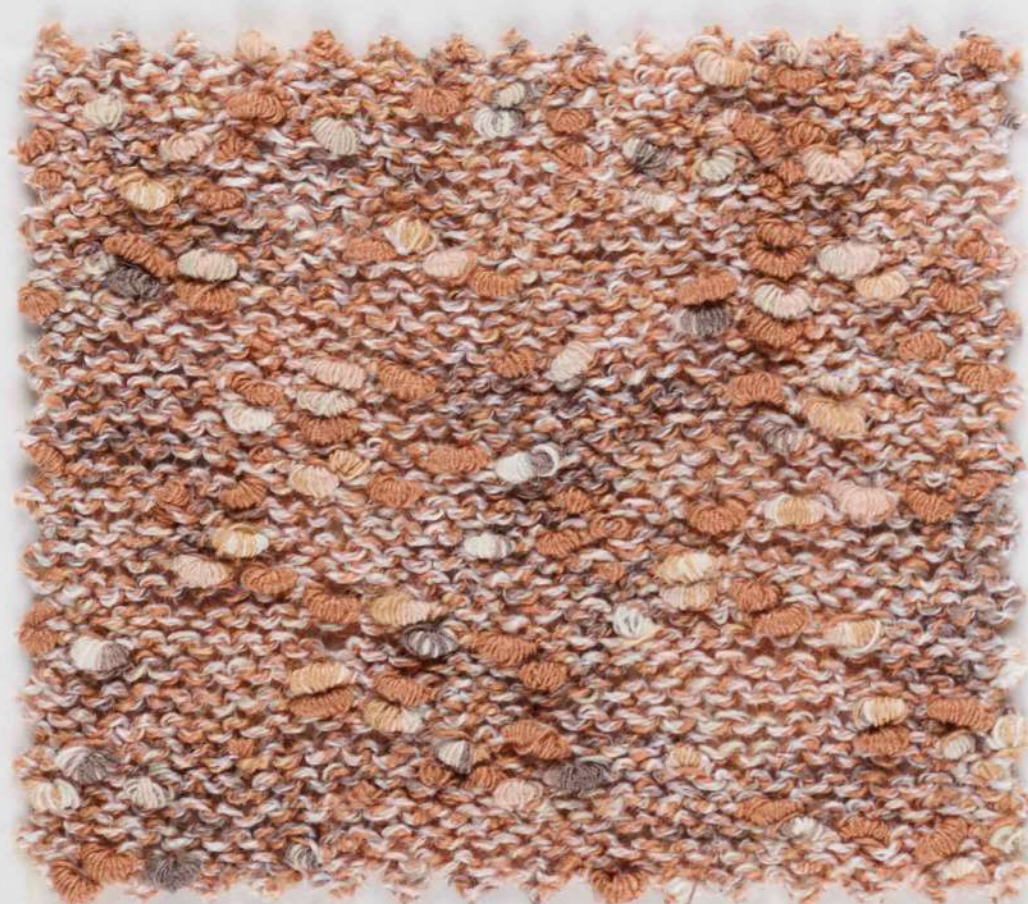


Certified by ICEA
ICEA-TX-759

GATTA ⑧

Nm. 4.500

60% COTONE
40% FIBRA POLIAMMIDICA

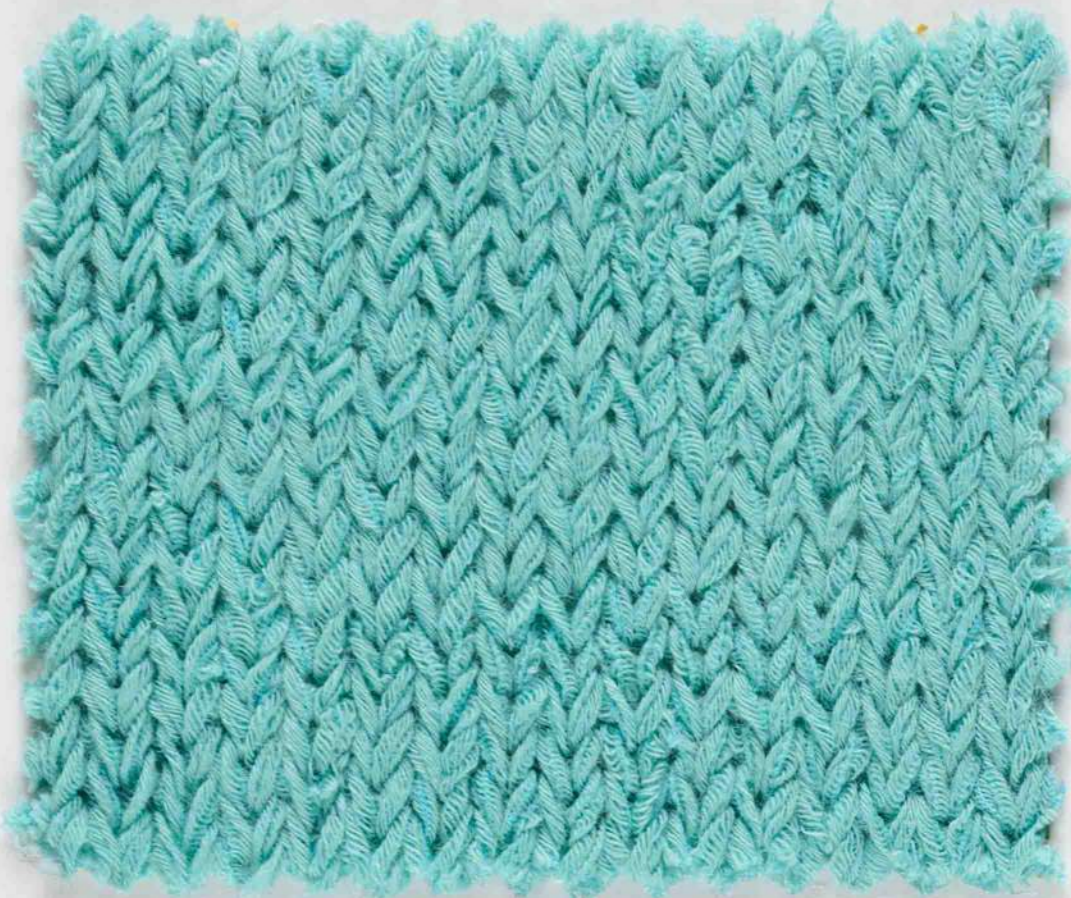


COCOON ⑨

Nm. 9.000

70% COTONE - 30% FIBRA POLIAMMIDICA

RIBBONS



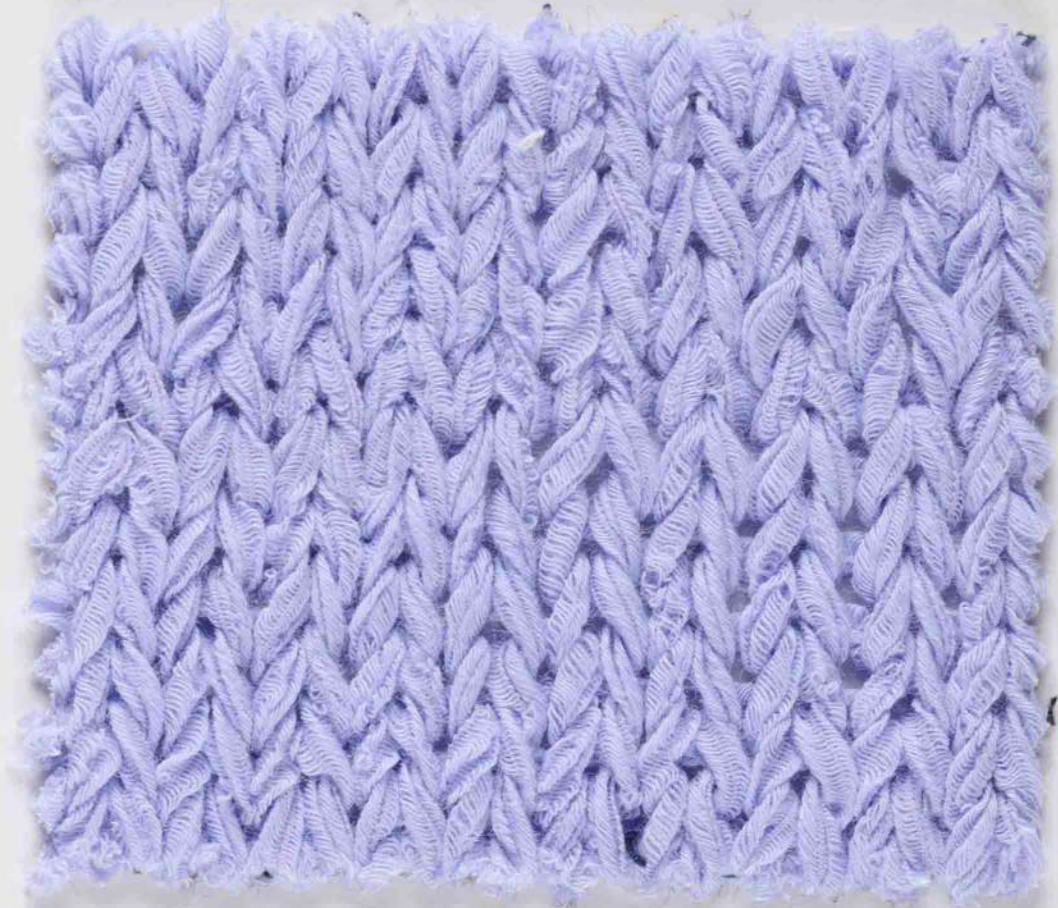
Certified by ICEA
ICEA-TX-759

61% ORGANIC CO
39% PA

NASTRINO (10)

Nm. 3.200

61% COTONE ORGANICO
39% FIBRA POLIAMMIDICA



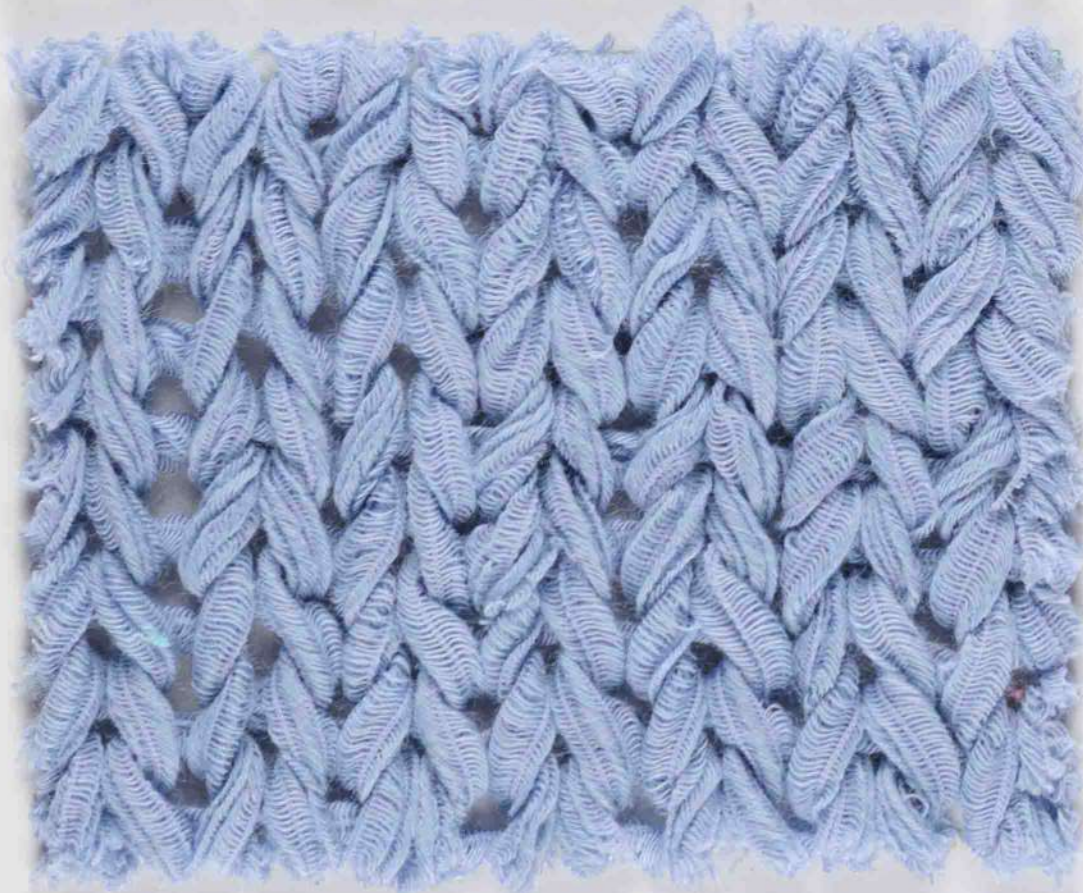
Certified by ICEA
ICEA-TX-759

66% ORGANIC CO
34% PA

NASTRO (10)

Nm. 1.900

66% COTONE ORGANICO
34% FIBRA POLIAMMIDICA



Certified by ICEA
ICEA-TX-759

69% ORGANIC CO
31% PA

NASTRONE (10)

Nm. 1.300

69% COTONE ORGANICO
31% FIBRA POLIAMMIDICA



Certified by ICEA
ICEA-TX-759

36% ORGANIC CO
64% PA

BRINATO (11)

Nm. 3-300

36% COTONE ORGANICO
64% FIBRA POLIAMMIDICA

RIBBONS



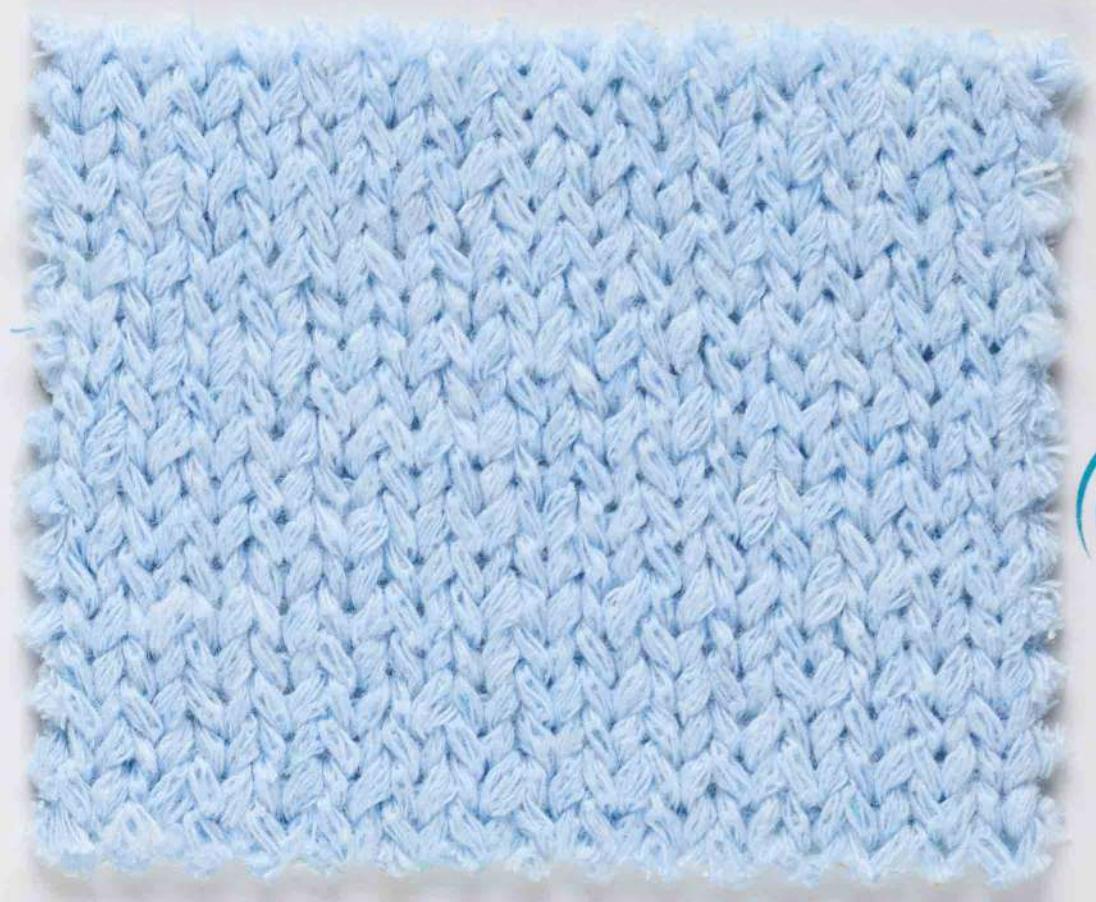
Certified by ICEA
ICEA-TX-759

40% ORGANIC CO
60% PA

TEQUILA BUM BUM (12)

Nm. 2.200

40% COTONE ORGANICO
60% FIBRA POLIAMMIDICA

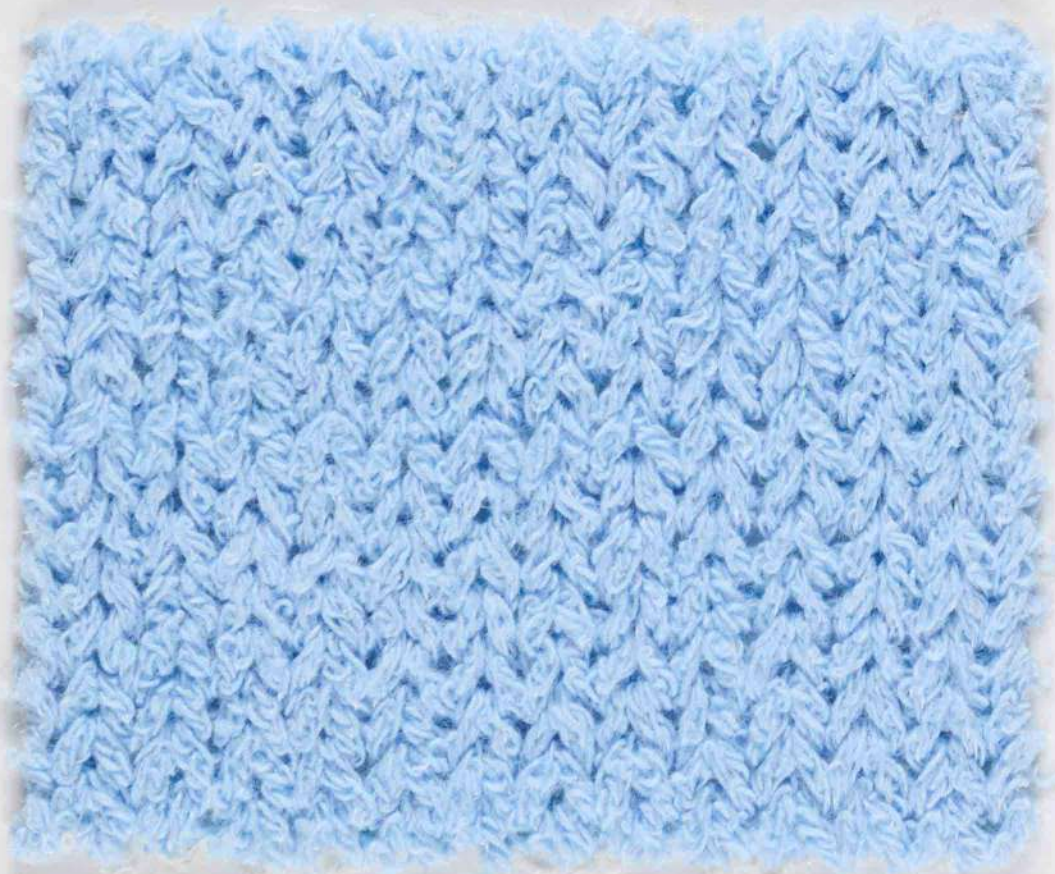


Certified by ICEA
ICEA-TX-759

BURMILLA (13)

Nm. 3.250

50% COTONE RICICLATO GRS
50% POLIESTERE RICICLATO GRS



Certified by ICEA
ICEA-TX-759

GREVE (14)

Nm. 2.800

43% COTONE RICICLATO GRS
43% POLIESTERE RICICLATO GRS
14% FIBRA POLIAMMIDICA RICICLATA GRS



Certified by ICEA
ICEA-TX-759

GREVE BINATO (14)

Nm. 1.350

43% COTONE RICICLATO GRS
43% POLIESTERE RICICLATO GRS
14% FIBRA POLIAMMIDICA RICICLATA GRS

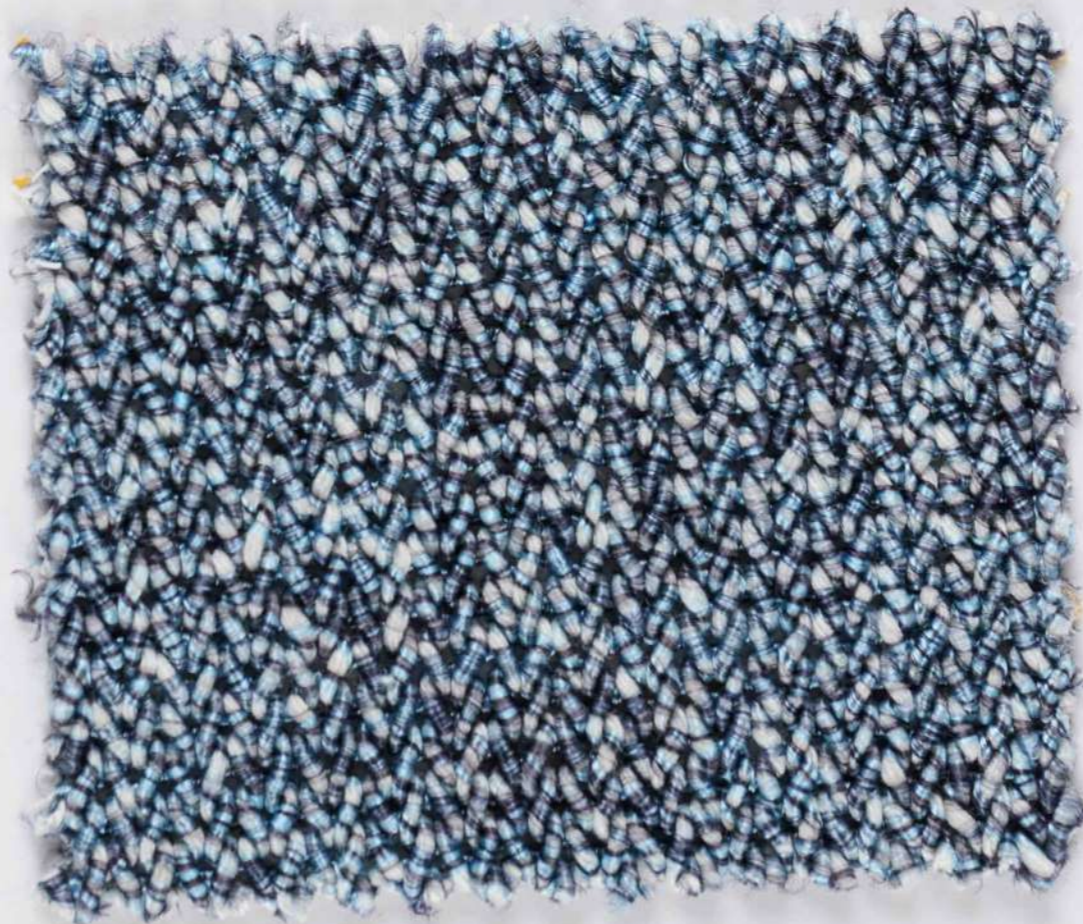
DENIM LOOK



HAVANA 15

Nm. 6.100

33% COTONE RICICLATO GRS
33% POLIESTERE RICICLATO GRS
34% FIBRA POLIAMMIDICA



GRANADA 16

Nm. 2.500

36% COTONE RICICLATO GRS - 28% POLIESTERE
36% POLIESTERE RICICLATO GRS

DENIM LOOK



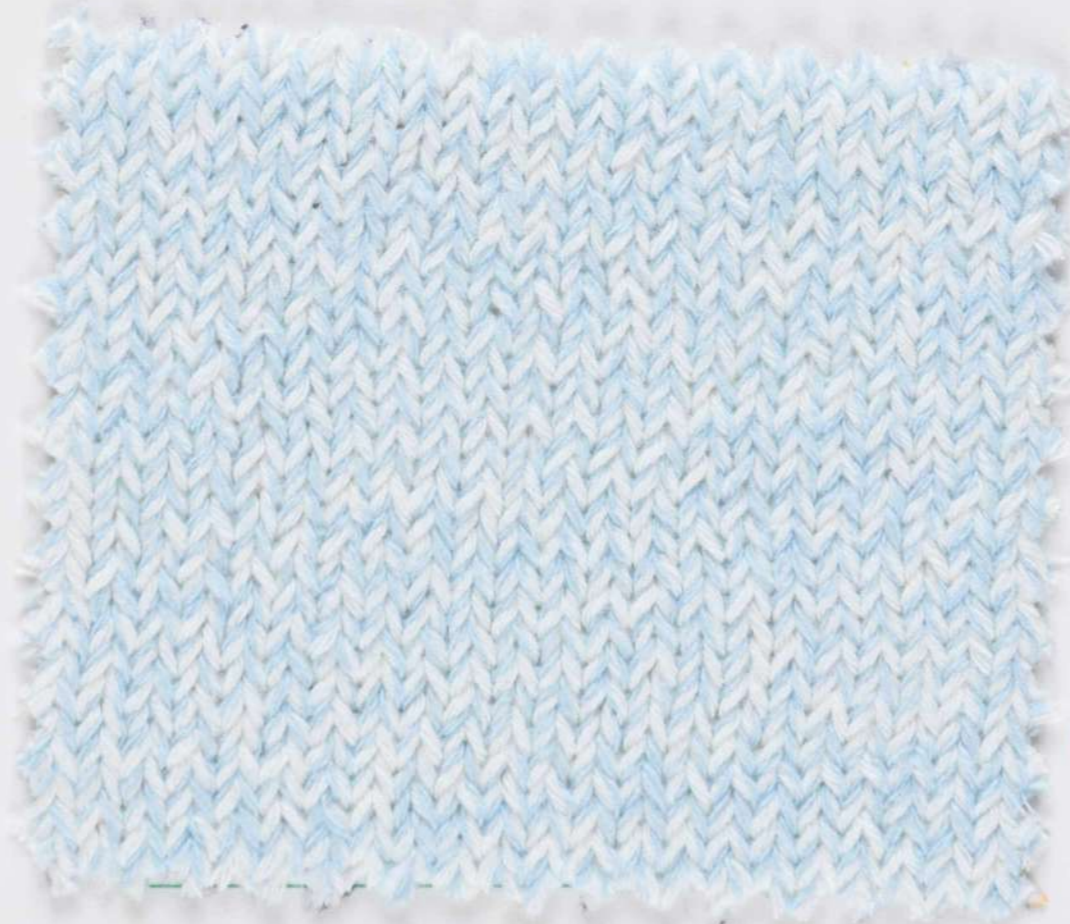
Certified by ICEA
ICEA-TX-759

78% ORGANIC CO
22% PA

SCOTTISH (17)

Nm. 1.800

78% COTONE ORGANICO
22% FIBRA POLIAMMIDICA



Certified by ICEA
ICEA-TX-759

100% ORGANIC CO

FELIX (18)

Nm. 6.200

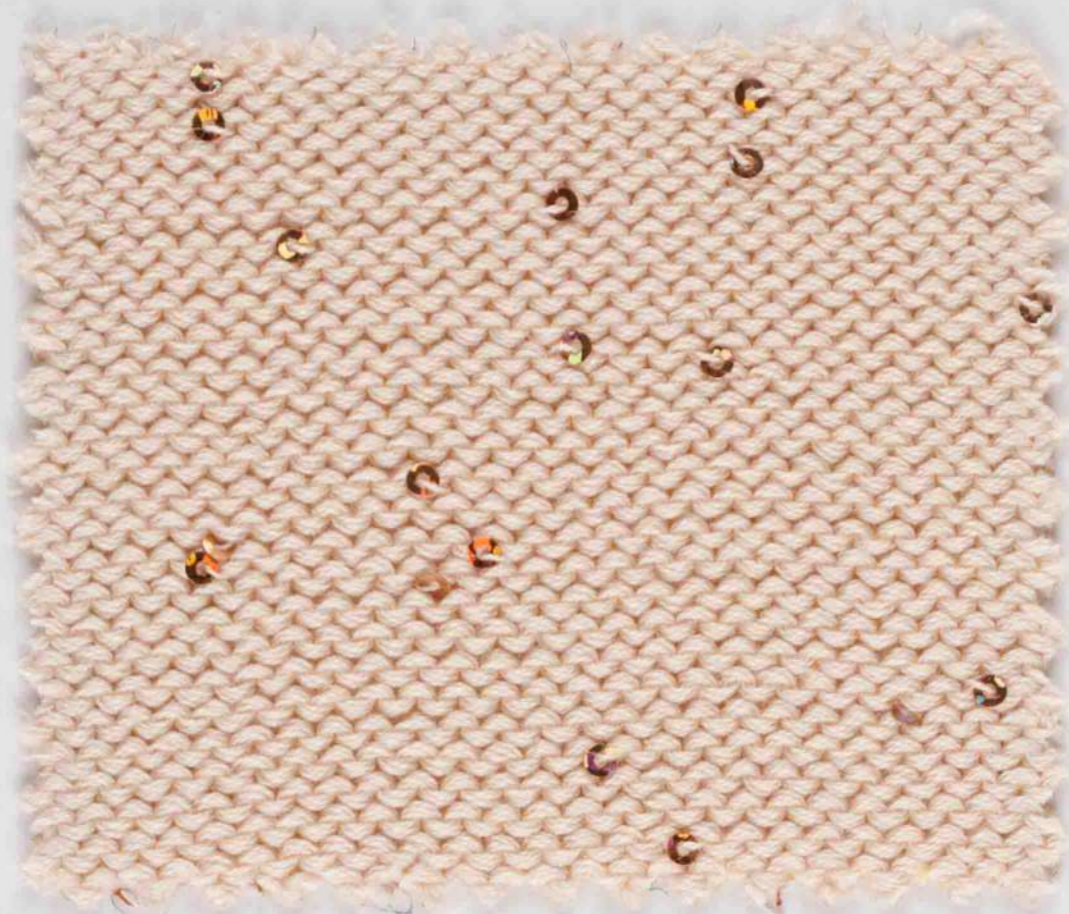
100% COTONE ORGANICO

NEWMILL
AN ITALIAN
FAMILY YARN

SPRING
SUMMER
2026



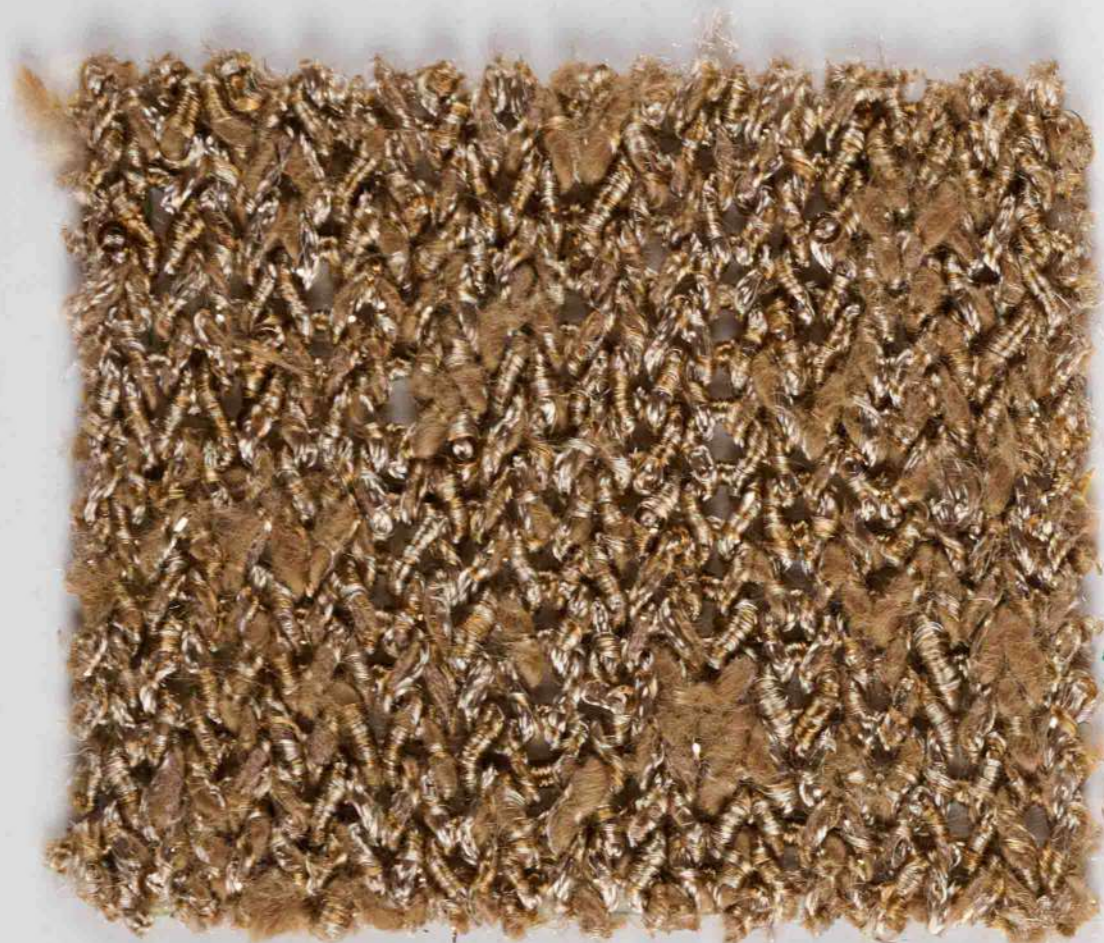
SHINY



MAINE COON (19)

Nm. 7.100

98% COTONE - 2% POLIESTERE



ORIENTALE (20)

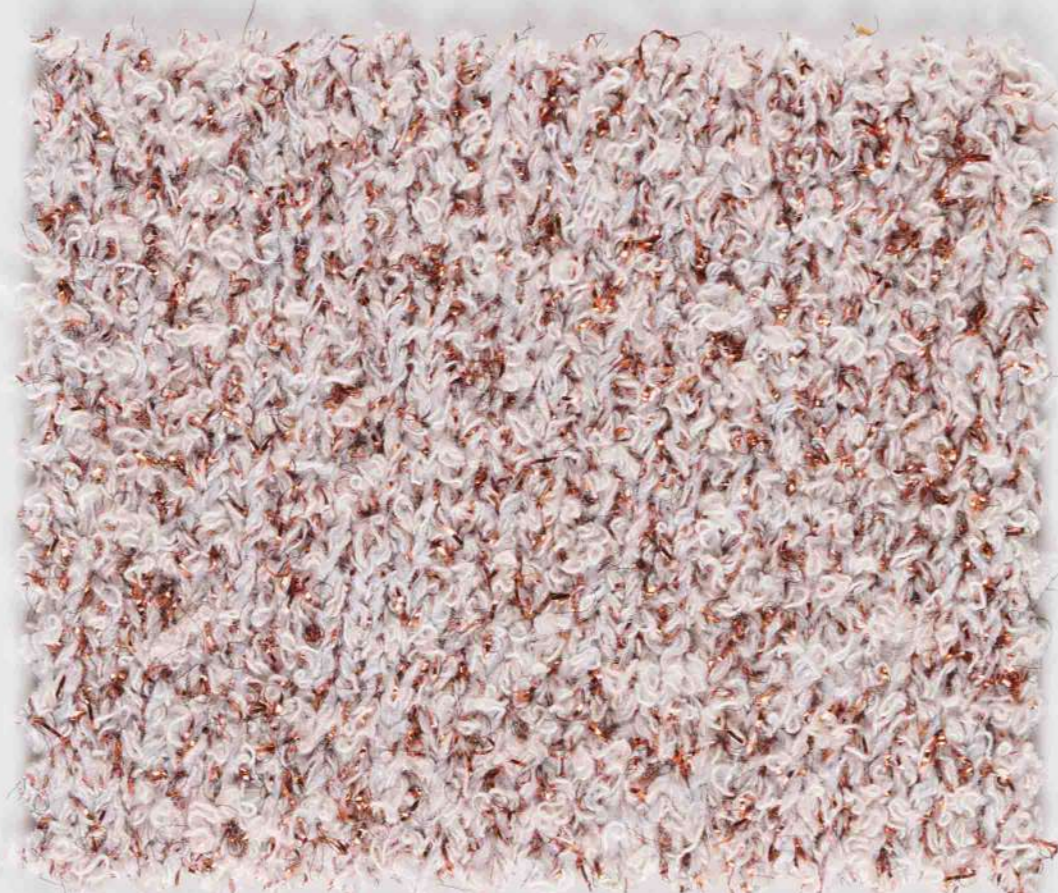
Nm. 2.200

37% COTONE - 57% POLIESTERE
5% FIBRA POLIAMMIDICA
1% FIBRA METALLIZZATA



ON REQUEST

37% ORGANIC CO
57% PL - 5% PA - 1% ME



LUSSO (20)

Nm. 5.800

79% VISCOSA FSC - 15% FIBRA POLIAMMIDICA
6% FIBRA METALLIZZATA



PARTY (21)

Nm. 35.000

70% VISCOSA FSC - 16% FIBRA POLIAMMIDICA
14% FIBRA METALLIZZATA



PARTONE (21)

Nm. 7.000

70% VISCOSA FSC - 16% FIBRA POLIAMMIDICA
14% FIBRA METALLIZZATA



SHINY



ON REQUEST
73% ORGANIC CO
12% ME - 15% PA



Certified by ICEA
ICEA-TX-759

SIAMESE

22

Nm. 51.000

73% COTONE - 12% FIBRA METALLIZZATA
15% FIBRA POLIAMMIDICA



Waeco

ABEL

23

Nm. 22.500

90% VISCOSA FSC - 10% FIBRA POLIAMMIDICA



Waeco

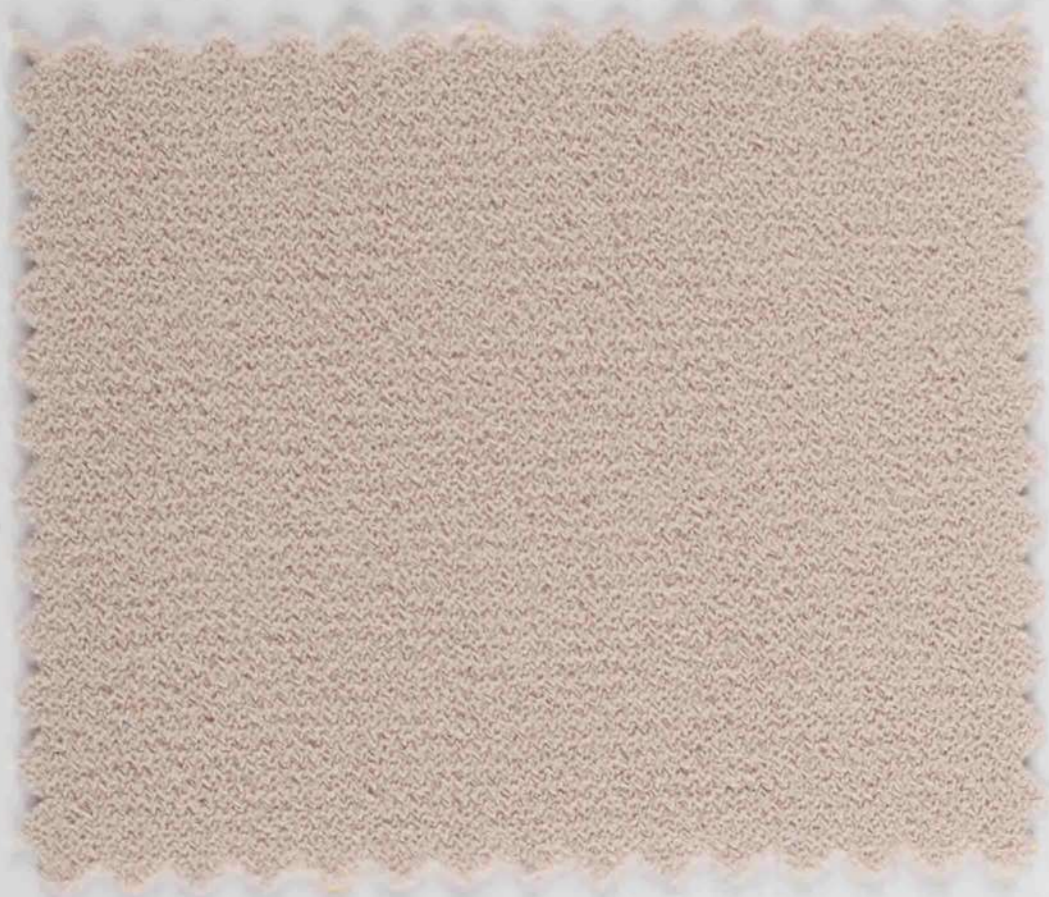
ABEL LUX

23

Nm. 20.500

82% VISCOSA FSC - 10% FIBRA POLIAMMIDICA
8% FIBRA METALLIZZATA

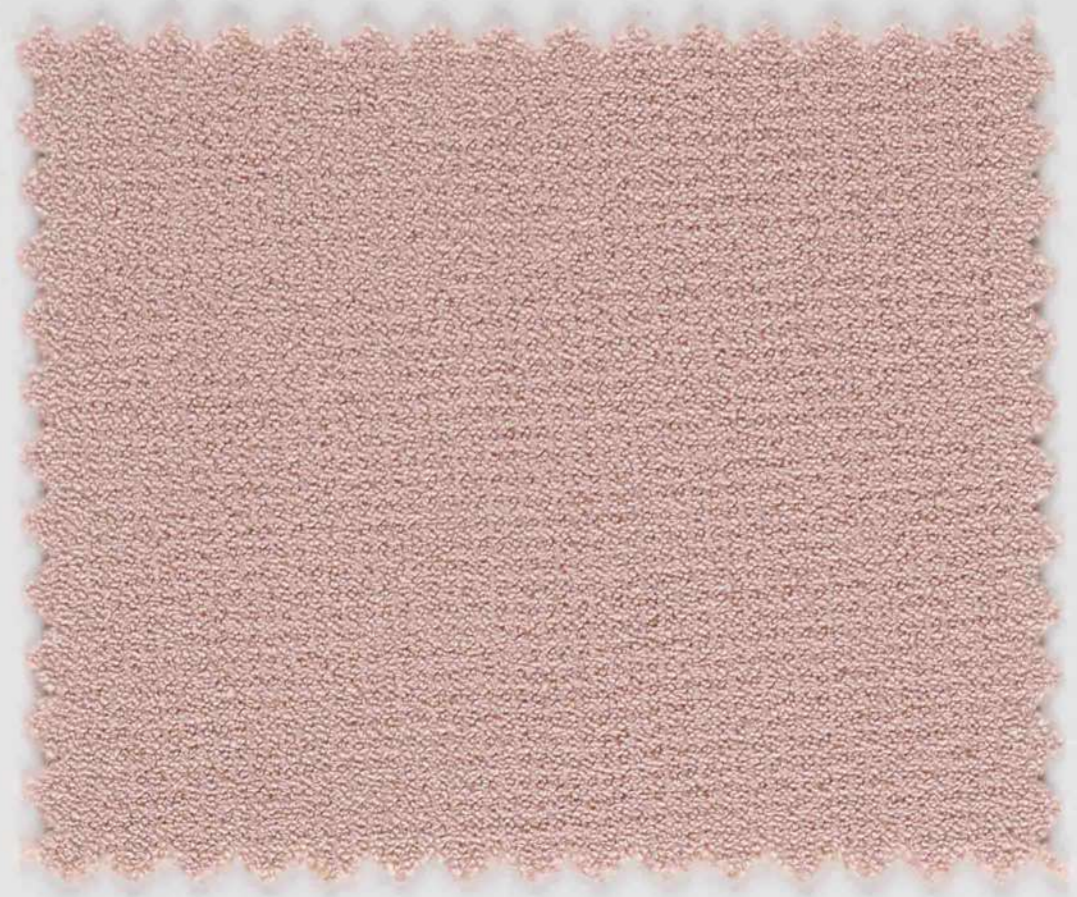
COMPACT LOOK



TUNIX (24)

Nm. 34.000

83% VISCOSA ENKA FSC - 17% PBT



CEDRINO (24)

Nm. 25.000

88% VISCOSA FSC - 12% PBT

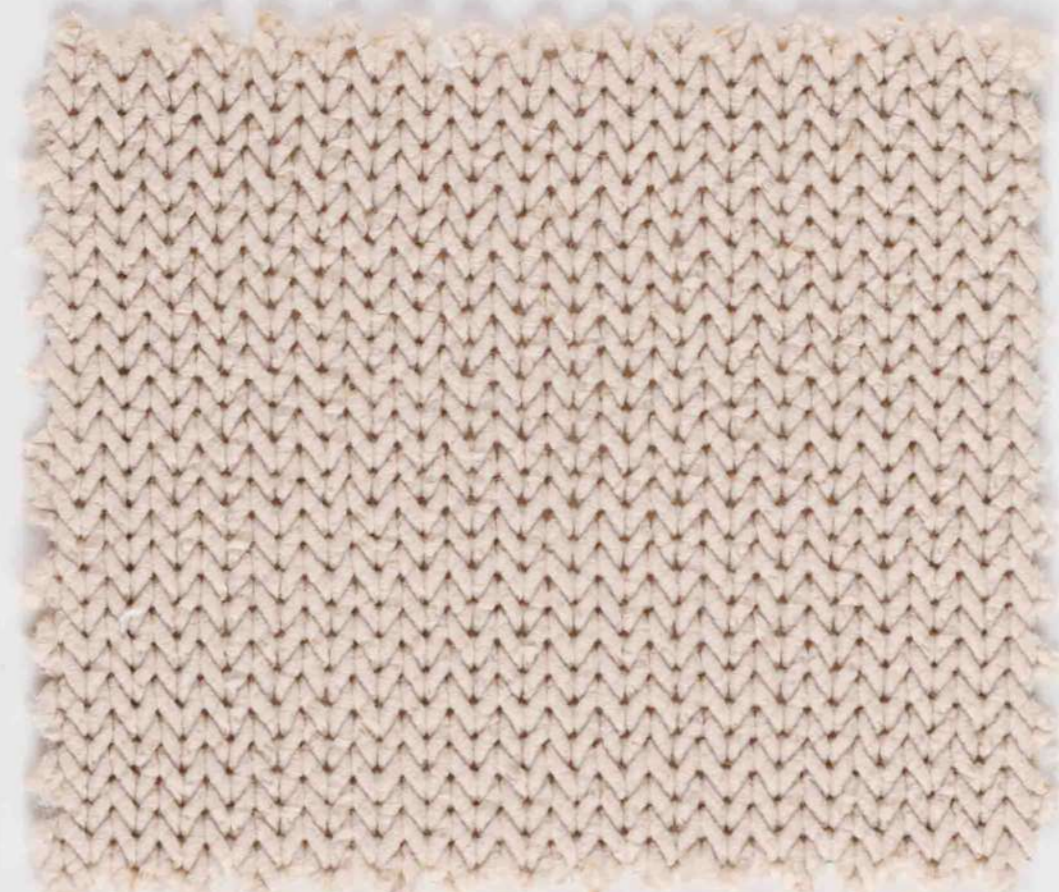


57% ORGANIC CO
43% PA

ORGANIC (25)

Nm. 14.300

57% COTONE ORGANICO
43% FIBRA POLIAMMIDICA



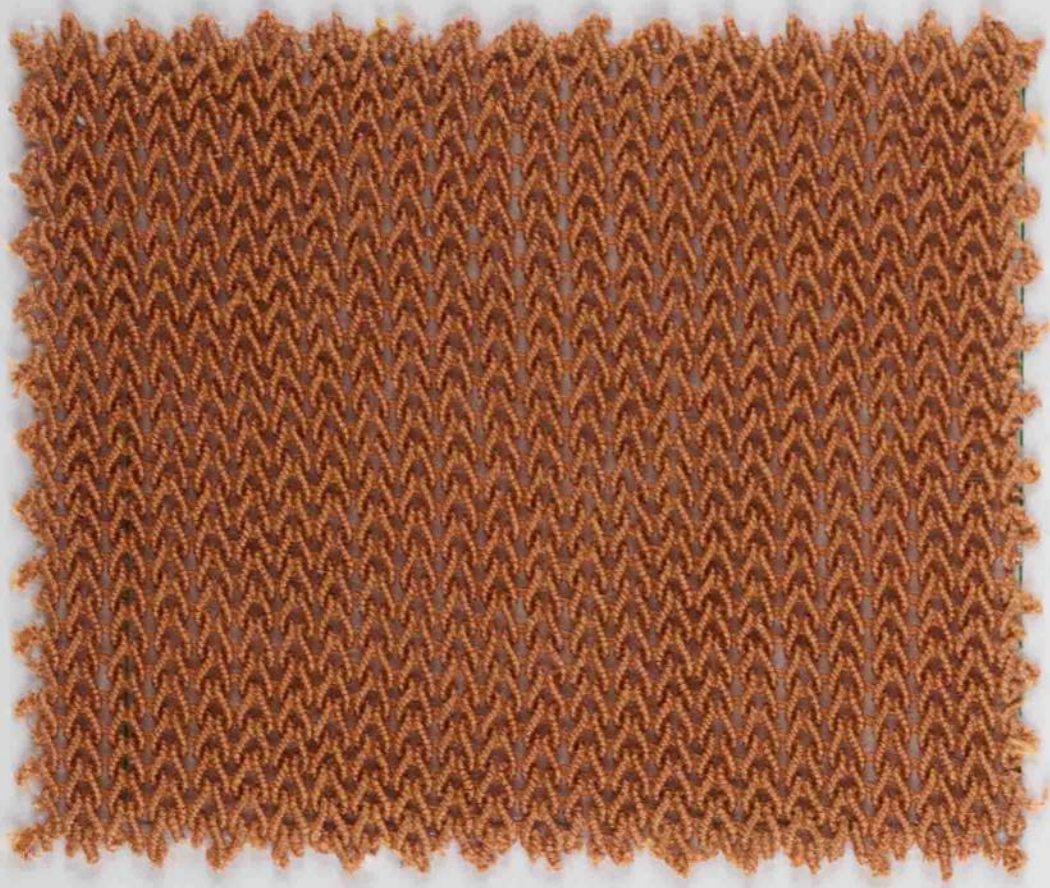
72% ORGANIC CO
28% PA

ALLEGRO (25)

Nm. 5.300

72% COTONE ORGANICO
28% FIBRA POLIAMMIDICA

COMPACT LOOK



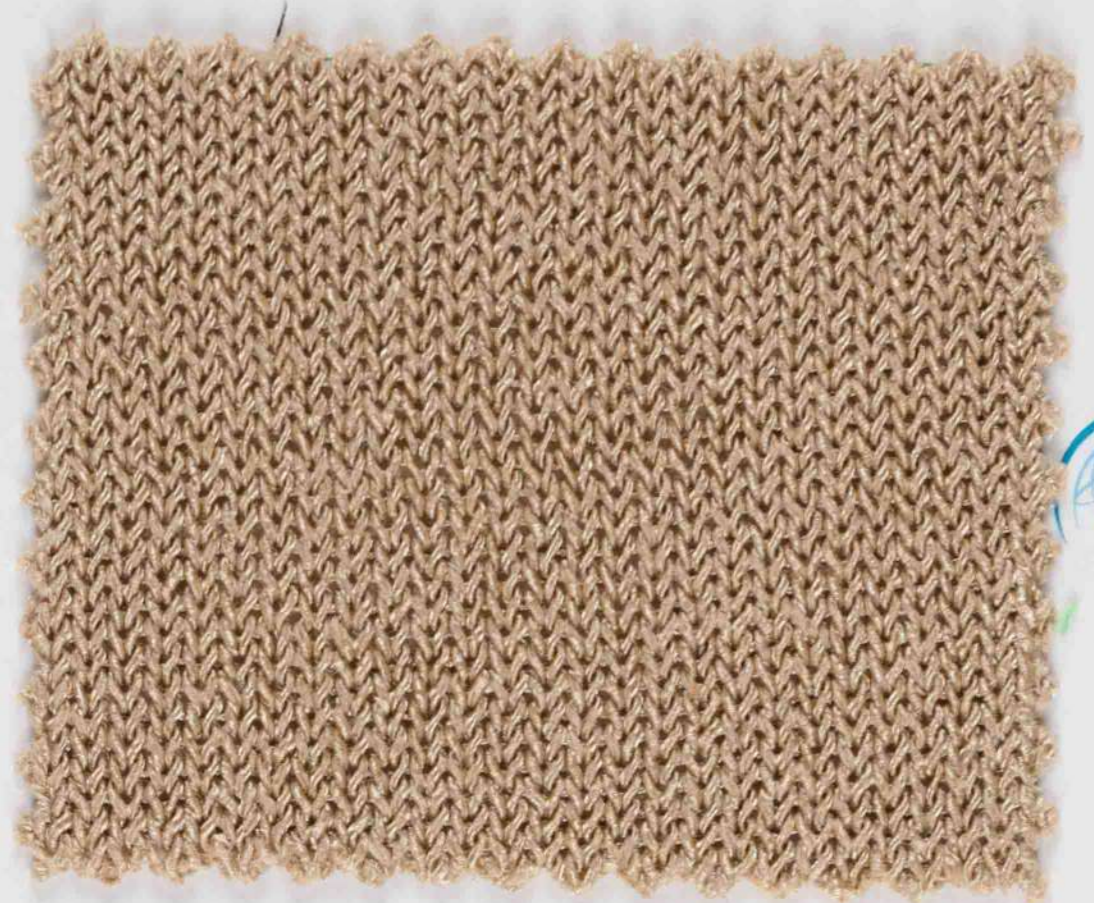
Certified by ICEA
ICEA-TX-759

100% ORGANIC
COTTON

SORIANO (26)

Nm. 6.900

100% COTONE ORGANICO

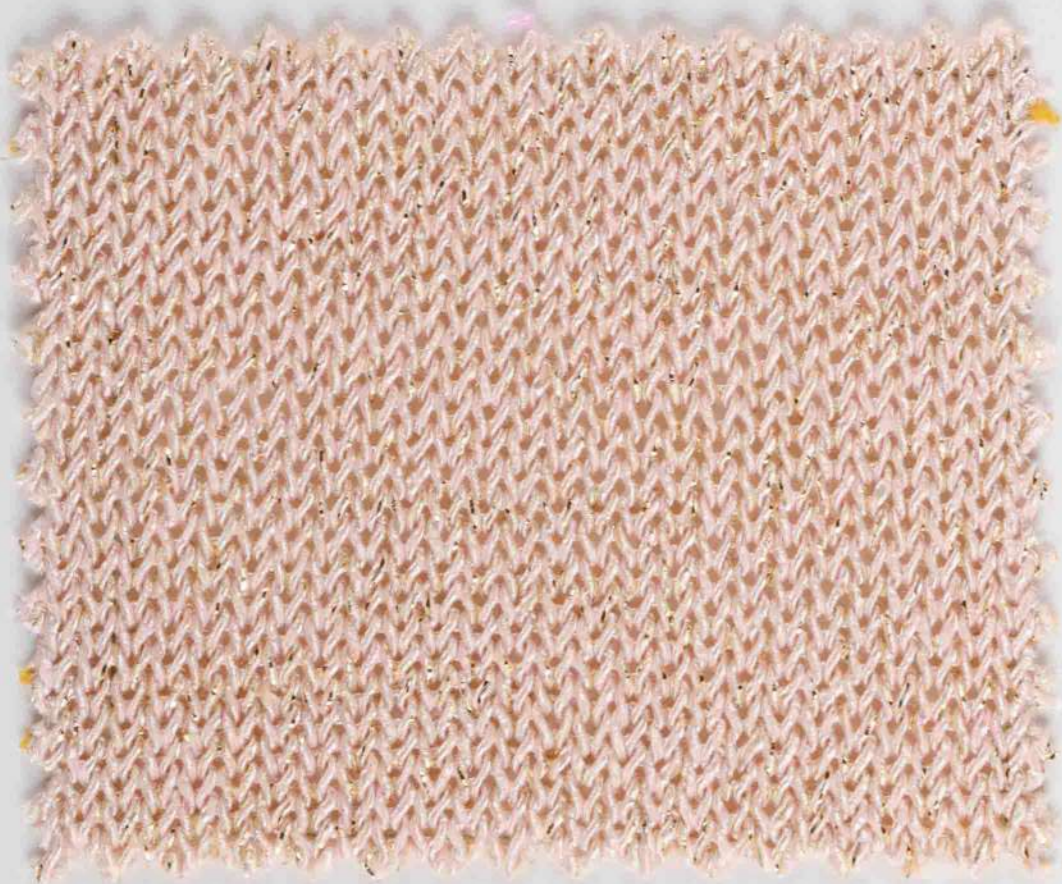


Certified by ICEA
ICEA-TX-759

PADEL (27)

Nm. 7.000

38% COTONE RICICLATO GRS - 24% POLIESTERE
38% POLIESTERE RICICLATO GRS

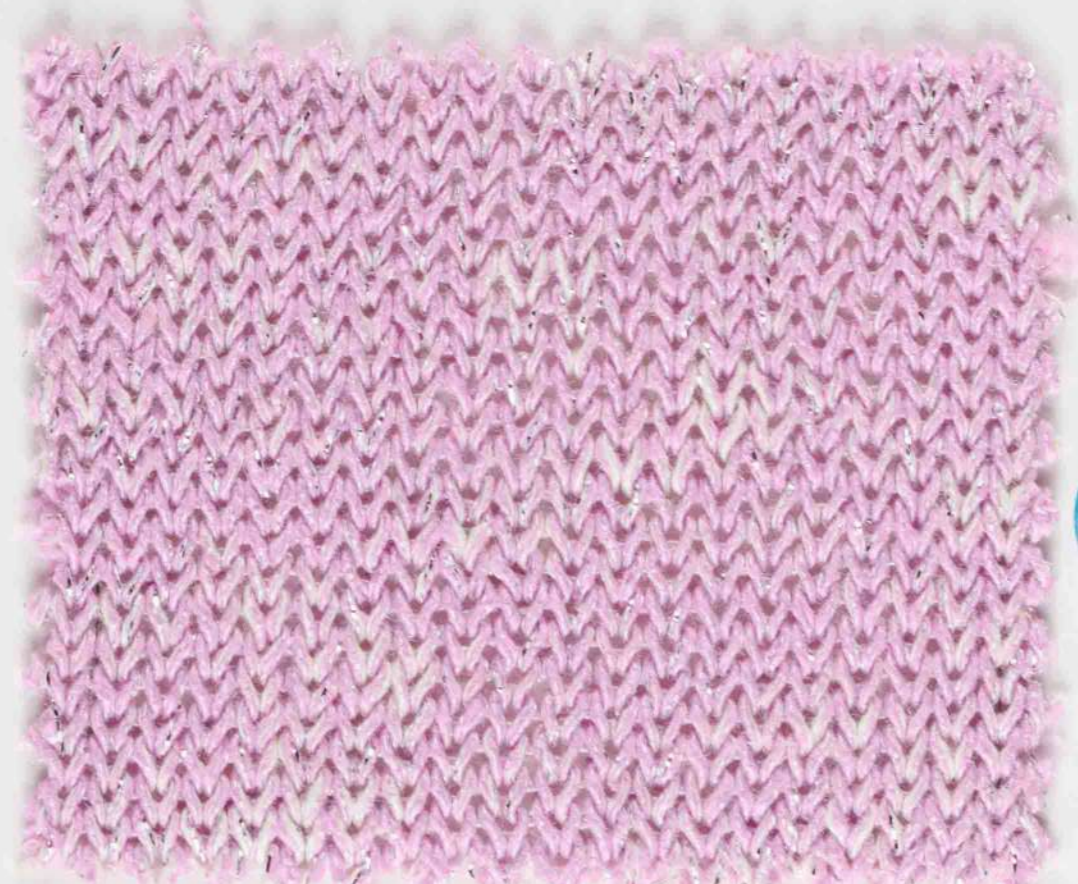


Certified by ICEA
ICEA-TX-759

PELOTA (27)

Nm. 6.500

35% COTONE RICICLATO GRS - 24% POLIESTERE
35% POLIESTERE RICICLATO GRS
3% FIBRA POLIAMMIDICA
3% FIBRA METALLIZZATA



Certified by ICEA
ICEA-TX-759

BURLA (28)

Nm. 5.000

32% COTONE RICICLATO GRS
16% COTONE - 32% FIBRA POLIACRILICA
3% FIBRA METALLIZZATA - 17% FIBRA POLIAMMIDICA

LINEN FIBRE



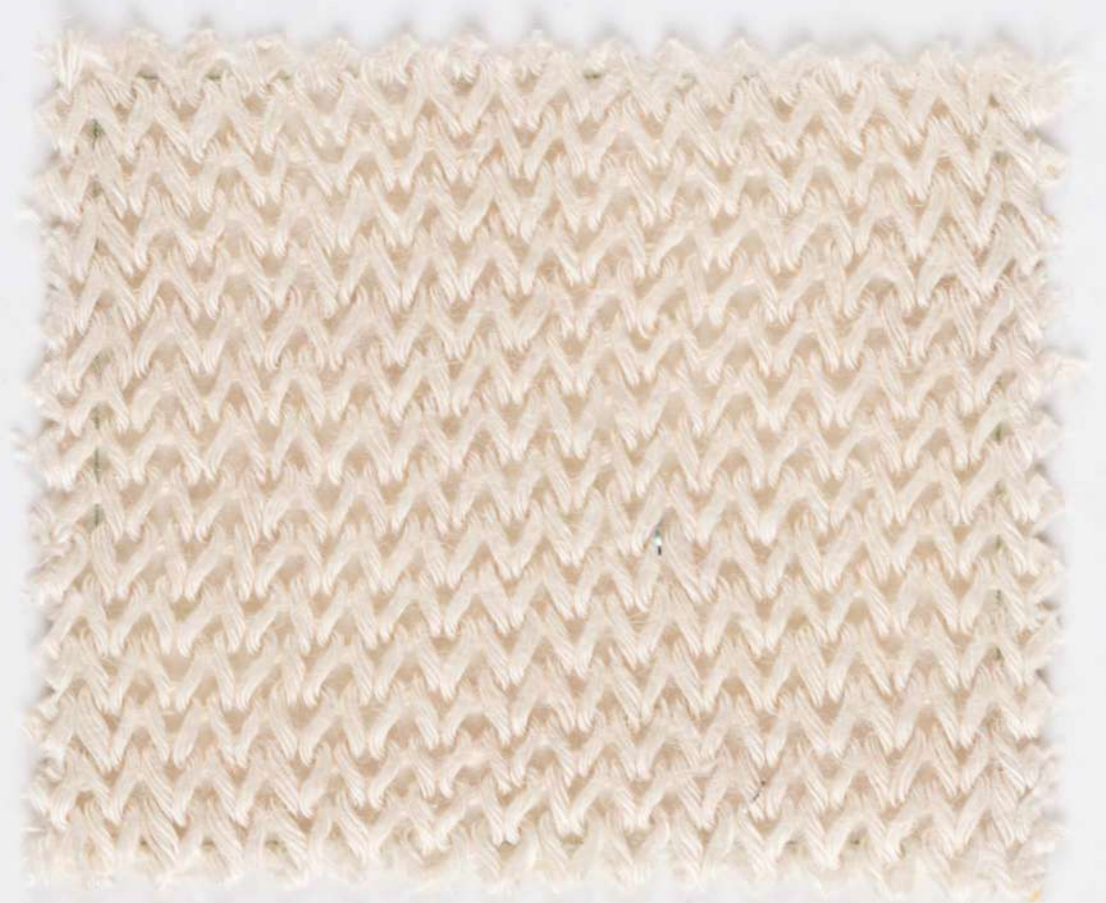
SUPERLINO (29)

Nm. 2/26.000
100% LINO



LINONE 6.600 (29)

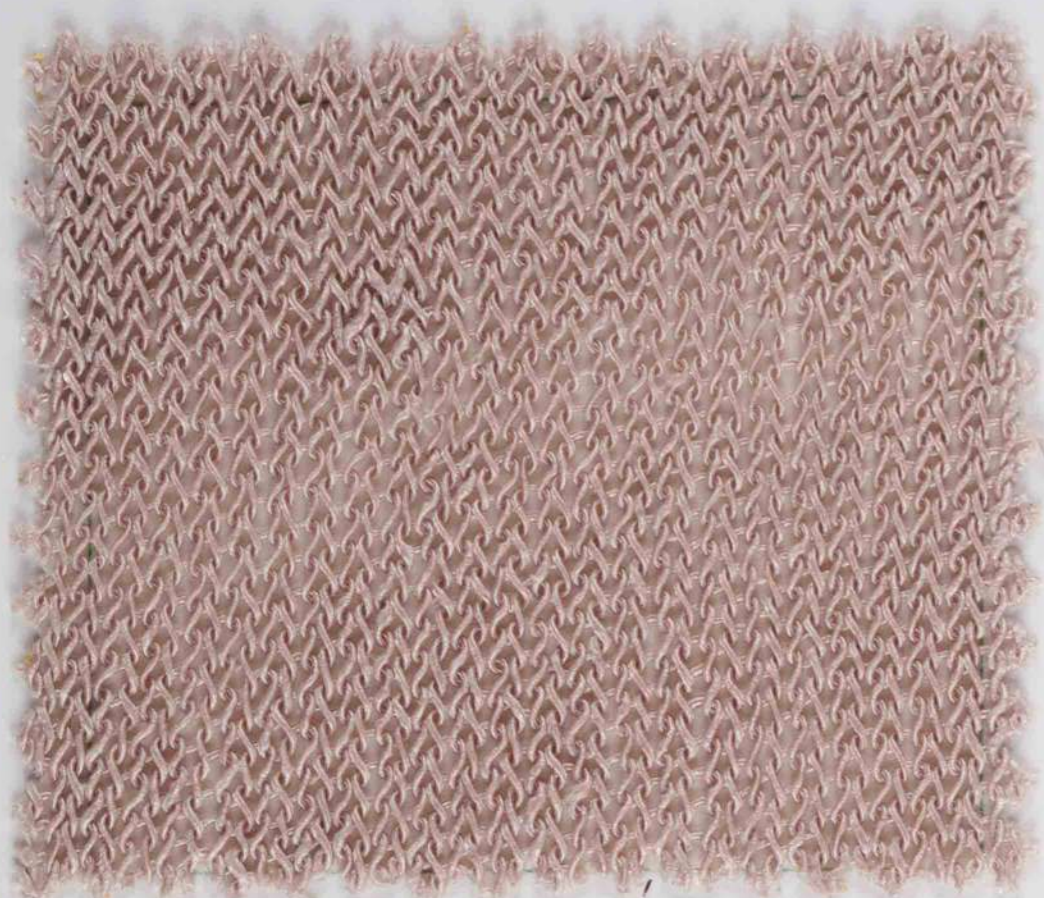
Nm. 4/26.000 (6.600)
100% LINO



LINONE 3.300 (29)

Nm. 8/26.000 (3.300)
100% LINO

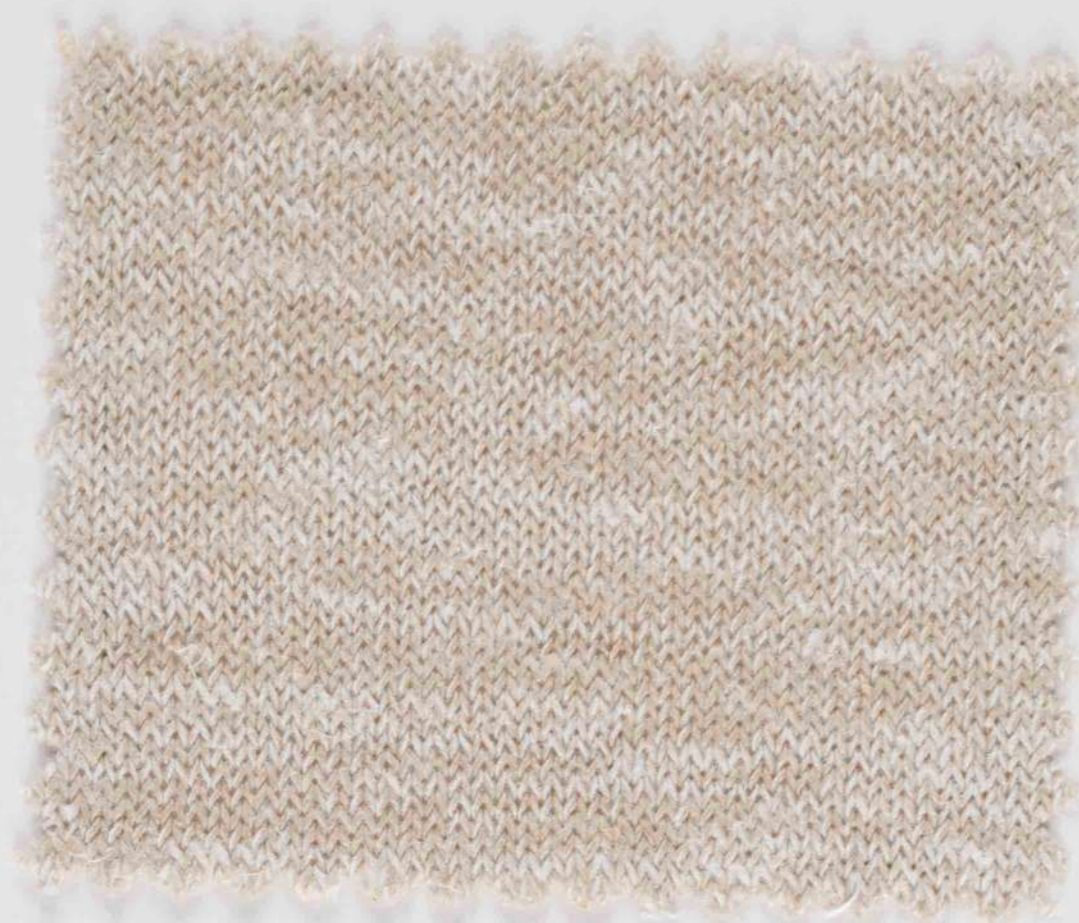
LINEN FIBRE



ESOTICO (30)

Nm. 7.200

80% LINO - 20% FIBRA POLIAMMIDICA



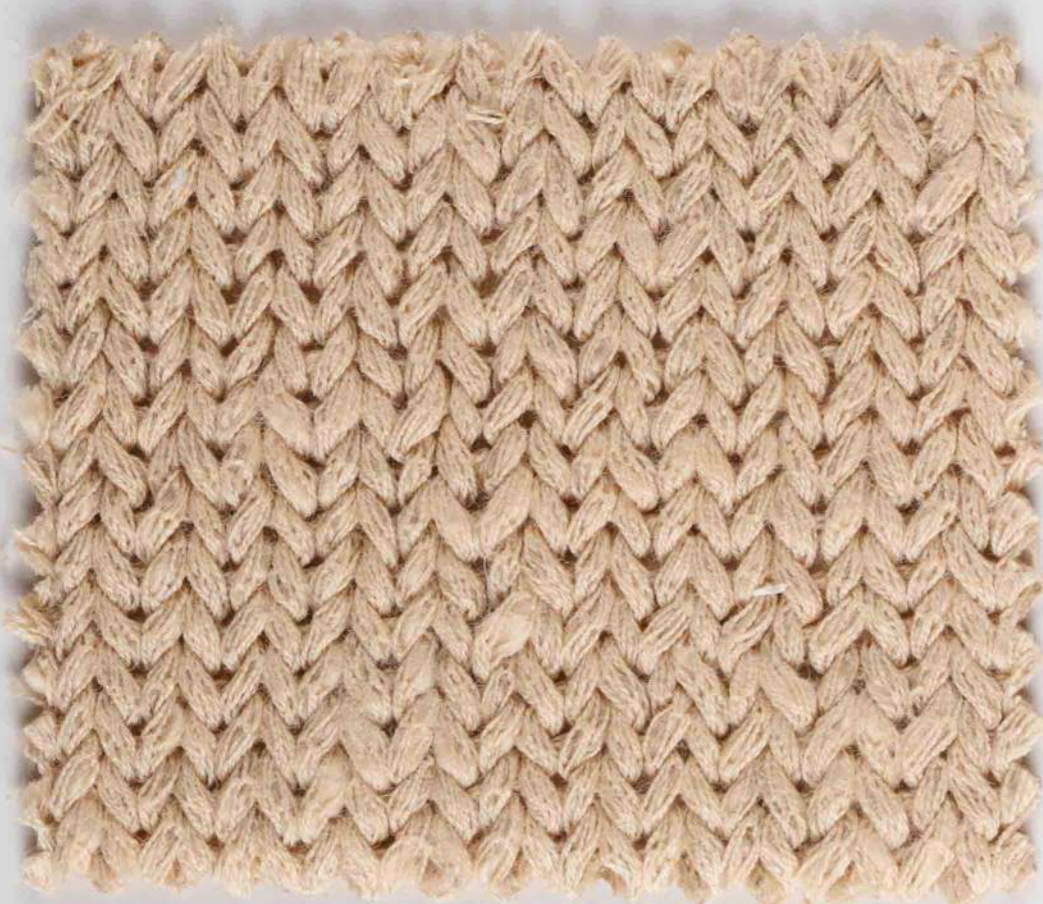
THAI (31)

Nm. 18.400

34% POLIESTERE RICICLATO GRS
33% LINO - 33% COTONE



Certified by ICEA
ICEA-TX-759



MAIS (32)

Nm. 2.200

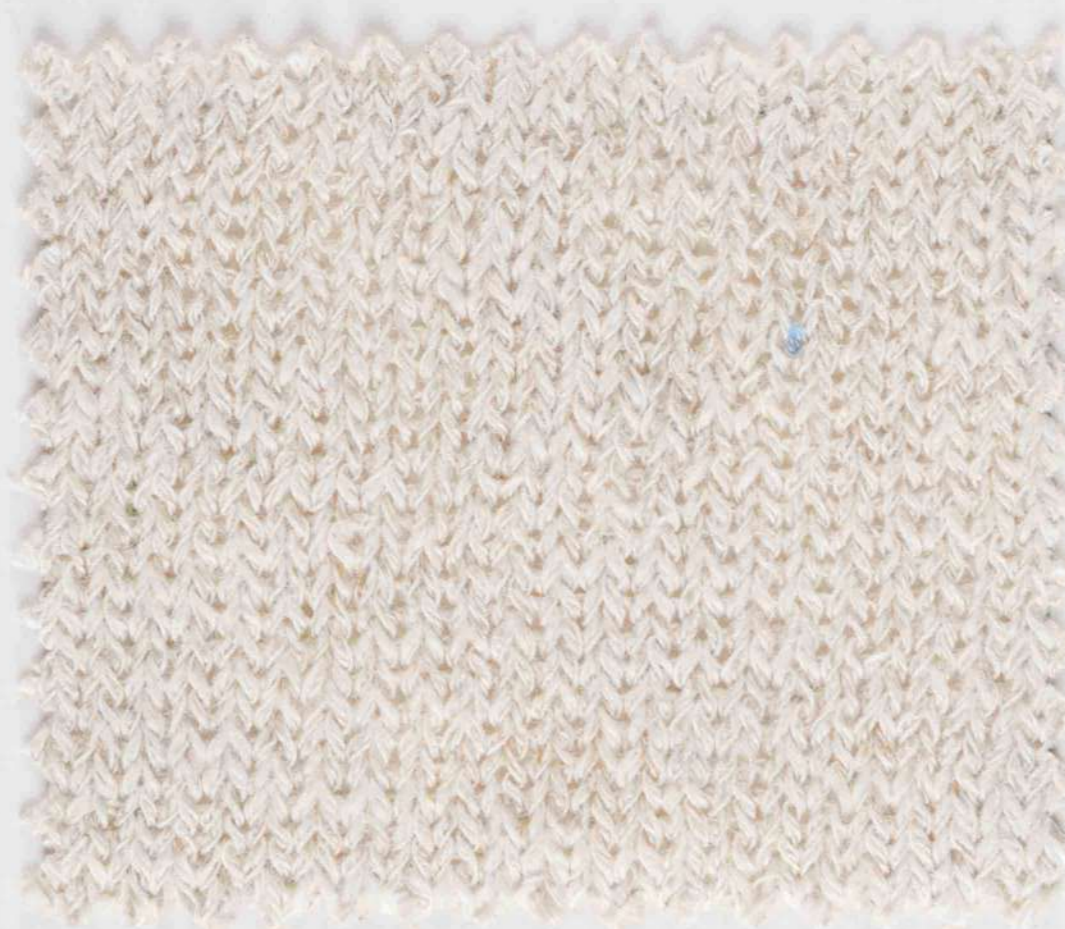
77% COTONE - 23% LINO



ON REQUEST
53% ORGANIC
COTTON
24% CO - 23% LINO



Certified by ICEA
ICEA-TX-759



MATERIAL (33)

Nm. 8.100

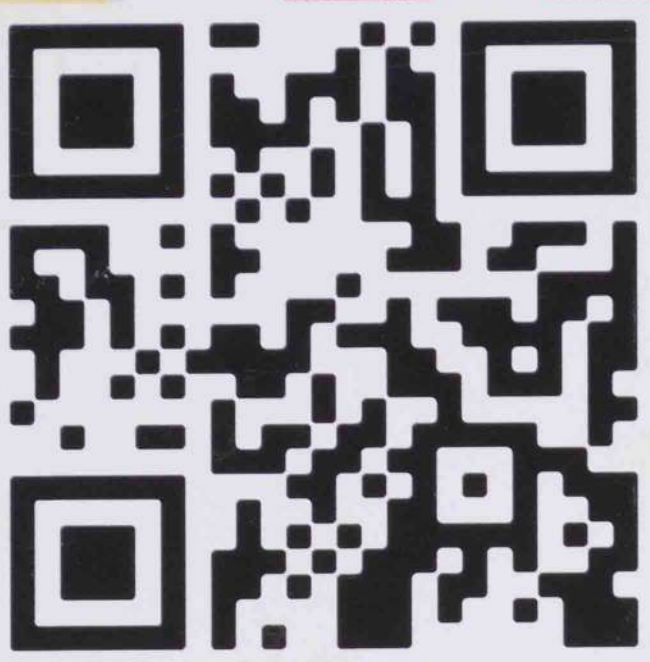
66% COTONE - 34% LINO



ON REQUEST
42% ORGANIC
COTTON
24% CO - 34% LINO



Certified by ICEA
ICEA-TX-759



NEWMILL SPA
VIA PALERMO, 41
MONTEMURLO (PO), ITALY
TEL. +39 0574 68161
WWW.NEWMILL.IT
MARKETING@NEWMILL.IT



Certified by ICEA
ICEA-TX-759



Certified by ICEA
ICEA-TX-759



FSC® C165828



Certified by ICEA
ICEA-TX-759



Certified by ICEA
ICEA-TX-759



Certified by ICEA
ICEA-TX-759

